



Chung Guyon Development Project
1997, pencil drawing on paper, 440x70cm

Figurative Journal: Chung Guyon Archive

February – September 2013 / Gallery 5

Numerous records on designs and the life of architect Chung Guyon (1945-2011) from his archives are presented to the public. The works shown were donated by Chung before his death. They evince the architect's extraordinary awareness of space and place, and the relationship between nature and people.

National Museum of Modern and Contemporary Art, GWACHEON

Korean Art from the Museum Collection: Contemporary Art and Grand Narratives | -II

Part I: December 2012 – June 2013 / Gallery 3 & 4
Part II: July 2013 – 2014 / Gallery 3

Divided into two parts, "Korean Art from the Museum Collection: Contemporary Art and Grand Narratives I -II" presents major narratives on contemporary Korean art. Part I features pieces from immediately after the Korean War to the 1990s, and Part II, from the 1990s to today.

Photographs from the Museum Collection

June 2013– January 2014

Photographs from the museum collection are examined at this special exhibition. Photographers who have played important roles in modern and contemporary art are featured to allow the viewers to gain some understanding while suggesting new viewpoints on interpretation of photography.



Kim Tae-dong Day Break-018
1997, pencil drawing on paper, 150x190cm

New Visions New Voices 2013

March – June 2013 / Gallery 1

New Visions New Voices has been held biennially since 1981 to promote young Korean artists. This year's exhibition is the 17th of the series, and it focuses on the experimental spirit and future potentials of young artists to consider the present of Korean contemporary art and attempt to divine its future.



Scene of Korea Artist Prize 2012
Exhibition at the Main Hall

Korea Artist Prize 2013

July – September, 2013 / Gallery 1 & 2, Main Hall

The exhibition of the "Artist of the Year" has run for 15 years and was revamped in 2012 to fully accept young, fresh, promising artists. The exhibition will allow the viewers to see the latest trends in art through works by artists who represent Korea.



Youn Myeung-ro Breathing MK-218
2010, acrylic, indescence on cotton, 218x291cm

Youn Myeung-ro: Traces of the Spirit

March – June 2013 / Gallery 2, Main Hall

This is a comprehensive retrospective of Youn Myeong-ro (1936–), a master painter who has established his own painting style by fully embracing the flow of Korean contemporary art. He has completely indulged his passion for creativity in painting, print, ceramics, and drawing, and he has constantly changed his style as he sees fit according to a ten-year cycle, from the "Tattoo" series in the 1960s to the "Homage to the Gyeongjae" series in the 2000s.



Lee Kwang-sun, mok-bracelet

Ornament and Illusion - Spectrum of contemporary jewelry

June 2013 – 2014 / Circular Gallery 2

MMCA arranges its first exhibition on contemporary art jewelry. More than two hundreds of works by forty four representative Korean artists are presented to show the contemporary craft scene. The spirit of the artists realized in exquisite pieces and their exploration into materials will provide art lovers and the rest of the public an exciting new artistic experience.

Special Exhibition on Design

July 2013 – 2014 / Gallery 4

MMCA will present a variety of art genres by hosting a design exhibition starting in 2013. The design exhibition seeks to expand the domain of contemporary art and culture and initiate new discourse on contemporary art. Also, this exhibition incorporates specialized subjects such as humanities and social sciences and reflects contemporaneity to communicate with the public, discover artists in the field of design, and collect material for artworks on design.

Korean Art from the Museum Collection: Kwon Jin-kyu, Kim Chung-sook

August 2013 – 2014 / Corridors on the 2nd and 3rd floor

This exhibition intends to gain some understanding of the intense spirit of modern and contemporary Korean sculptors through works of Kwon Jin-kyu (1922–1973), who shows the depth of quiet meditation through refined abstract sculpture of terra cotta, and works of Kim Chung-sook (1917–1991), who played a leading role in introducing abstract sculpture to Korea.



David Hockney Bigger Trees Near Warter
2007, oil on canvas, collection of Tate

David Hockney: Bigger Trees Near Warter

September 2013 – February 2014 / Main Hall

Recent works by David Hockney (1937–), an English painter and photographer and the best-known British artist of his generation, will be showcased at MMCA. Hockney is well known for composing his own canvas based on the realism that originated in pop art and photography. He looked at nature "hard and for a long time" in Bridlington, a village in northern Britain where he lived, and he realized traces of his observations of nature in such works as "Bigger Trees Near Warter" to be shown at this exhibition.

Media Art from the Museum Collection

September – December 2013/ Circular Gallery 1

This special exhibition allows the viewers to get a glimpse into the development and originality of Korean contemporary media art. It presents representative media artworks in the collection of the museum. Featured are pioneering works by icons of Korean video art including Nam June Paik (1932–2006) and Park Hyun-ki (1942–2000), as well as new media works by young artists actively working today including Lee Yong-baek, Jung Yeon-doo, and Ham Yang-ah.

A Selection of the New Media Collection, Centre Pompidou, Paris Video Vintage: 1963 ~ 1983

September – December 2013/ Circular Gallery 1

Video Vintage: 1963 ~ 1983 looks at the birth of video art and its historical development in the context of contemporary art though representative new media artworks in the collection of Centre Pompidou, those from the early 1960s, when video was first used as a means of artistic expression, to the 1980s, when video art developed in association with various genres such as performance, film, music, dance, television, and literature. Eighty works by fifty artists including video artists Nam June Paik and Bill Viola, and film director Jean Luc-Godard.



Itami Jun Church of Sky
2010, Photography by Sato Shinichi

Itami Jun

October 2013 – 2014 / Gallery 5

"Retrospective of Itami Jun" (1937–2011), allows viewers to look into the art world and creative mind of Itami Jun, the internationally renowned Korean-Japanese architect. He inquired into architectural subjects in great detail by such means as in-depth exploration into materials and regionality in Korea and Japan.



Kwon Young Woo Untitled
1980, perforated paper, 143x111cm, collection of MMCA

White & White: Dialogue between Korea and Italy

March – June 2013

"White & White" was arranged as part of the program by MMCA to introduce Korean contemporary art overseas. This exhibition is designed to build consensus between Korea and Italy through contemporary art. It intends to serve as a broader forum for understanding visual art through interpretation and viewpoints of contemporary artists from Korea and Italy.

Korean Contemporary Art Exhibition Overseas



Park Hong-chaun To Alice 1
1994, Pulchroona print, 118x118cm, collection of MMCA

Who is Alice?

May – November 2013 / Venice (Light Box)

MMCA presents "Who is Alice?" in Venice, featuring works from the collection of MMCA that embody creativity and imagination of Korean contemporary artists working in diverse genres, for visitors to the 55th Venice Biennale held from June 1 through November 24, 2013.

National Museum of Modern and Contemporary Art, Deoksugung



Frantisek Kupka Study for Autumn Sun
1906, oil on cardboard, 46.5x70cm, collection of National Gallery in Prague

Memory of Landscape I Have Never Seen: Collections from National Gallery in Prague

Jan – Apr 2013

This exhibition introduces Czech modern art through 107 works by twenty-eight 20th-century artists from Prague. Czech modern art developed in its own unique way since the end of the 19th century by reflecting the country's unique sentiment. Works by master Czech modern artists who left their marks on the modern and contemporary art of Western Europe and Czech are presented.



Lee Kwae-dae Self Portrait in a Korean coat
1940s

Exhibition to Celebrate Lee Kwae-dae's 100th birthday

September – October 2013

This is a major retrospective of Lee Kwae-dae (1913–1965). He left a greater mark on Korean modern art than any other artist, and this exhibition is presented in commemoration of his 100th birthday. Leading realism in the 1930s and 1940s in Korea, Lee emerged as a painter of unchallenged standing in the Korean art world. Sadly, Lee has been all but completely forgotten since he defected to North Korea from a POW camp on Geogedo Island in 1953. This exhibition sheds light on paintings by Lee Kwae-dae comprehensively, twenty-two years since a solo exhibition on Lee Kwae-dae in 1991, the first such exhibition since the lifting in 1988 of the ban on artists who defected to North Korea.



Yanagi Muneyoshi

Yanagi Muneyoshi

May – July 2013

Yanagi Muneyoshi (1889-1961) became interested in western artists such as Rodin and William Blake. His interest in art and culture later expanded to Joseon Korea, Japan, and China, and he actively engaged in art exchange transcending East and West. This exhibition looks at Yanagi Muneyoshi's collection activities, which proceeded with his interest in William Blake, Joseon, Britain, Japan, China, and other Asian cultures. It also examines his achievements and activities as a literary philosopher including his long friendship with Bernard Leach through works in the collection of the Japan Folk Crafts Museum in Tokyo.

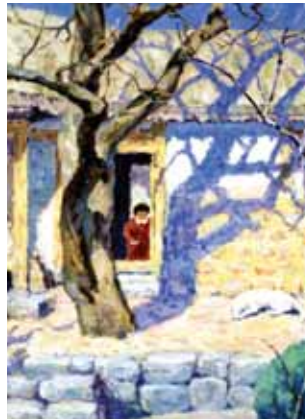


Lee Shin-ja Recollection
Dyeing, 59x163.5cm

Korean Contemporary Art and the National Academy of Arts

September – October 2013

This exhibition intends to help the viewers understand the life and art of doyen artists of Korea by looking at works of members of the National Academy of Arts, who have given more meaning to art and enhanced the status of Korean contemporary artists in historical contexts.



Oh Ji-ho House Facing South
1939, oil on canvas, 80x65cm, collection of MMCA

Masterpieces of Modern and Contemporary Korean Art

October 2013 – March 2014

This exhibition features important works in the history of Korean art that created a strong impression on Koreans from the early 20th century to the 1970s in order to look at modern and contemporary Korean art once again.

National Museum of Modern and Contemporary Art, Seoul

Connecting Unfolding

November 2013 – 2014

MMCA presents an exhibition under the theme of "Connecting" to commemorate the opening of MMCA Seoul and to suggest the characteristics of MMCA Seoul and the kinds of activities it should carry out. MMCA Seoul aspires to be the hub of contemporary art as a crossroad where tradition and modernity, and everyday living and art intersect. In this context, this exhibition is based on global networking with curators of museums in the US, UK, Germany, Japan and India. Through artists who express unique cultural characteristics of their countries, the exhibition aspires to find an appropriate direction and solutions for connecting and unfolding.

The Alef Project

November 2013 – 2014
Gallery 7, Media Lab, Multimedia Hall, Theater, etc.

The special exhibition "The Alef Project" will be held to celebrate the opening exhibition of MMCA Seoul. It intends to present a new paradigm of exhibition by suggesting a direction of communication that breaks down the boundaries between genres. This exhibition consists of new media, installation, film/video art, and performance to reveal the spirit of our times where diversity and pluralism are respected and values of fused cultures are pursued. Starting with "The Alef Project," MMCA Seoul plans to carry out many different experimental projects based on new fields of studies, media, and new technologies.



Seung Woo Back KP-412-268
2012

The Birth of a Museum : MMCA, Seoul Archive Project

November 2013 – 2014 / Gallery 8

"The Birth of a Museum" is a record of the construction of MMCA Seoul. The construction was a long undertaking. The major processes of preparation for the historic construction and opening of MMCA Seoul were duly recorded and composed into an archive. This exhibition will show the changes in the art museum connecting the past, present, and future in a unique and artistic way.

On-site Production and Installation Project

November 2013 – April 2014 / Info-Box, Gallery 6

Special exhibition to celebrate opening of MMCA Seoul. Grand new site-specific installation works by representative Korean artists actively working on the global art scene will be presented at Info-Box (a prominent space of MMCA Seoul), Gallery 6, etc.



Shin Hak-cheol Modern History of Korea
1989

Korean Art from MMCA Collection

November 2013 – 2014 / Gallery 1 & 2

The collection resides at the kernel of the museum, and it reflects the museum's past history, present status, and future direction. The collection of the MMCA in particular has an added significance: it represents the cultural value of contemporary Korean art, while at the same time it is an important cultural asset for the next generation. On the occasion of the opening of MMCA Seoul, valuable works that MMCA has collected for the past fifty years are organized in an easily accessible manner to allow views to glean the trends of modern and contemporary Korean art and new era to come.

National Museum of Modern and Contemporary Art in Brief

National Museum of Modern and Contemporary Art Gwacheon · Deoksugung

The National Museum of Modern and Contemporary Art, Korea (MMCA) opened in Gyeong-bokgung in 1969. It was then the country's only national art museum that showcased both the currents in Korean modern and contemporary art and the latest trends in international art. The museum relocated to Seokjojeon in Deoksugung in 1973 and again in 1986 to Gwacheon into a modern building with the latest facilities and an outdoor sculpture park. In 1998, the Deoksugung branch of MMCA was established, and in 2006, MMCA embarked on a path to become a fully professional and visitor-friendly institution.



National Museum of Modern and Contemporary Art, Seoul Scheduled to Open in 2013

The National Museum of Modern and Contemporary Art plans to open a new museum in 2013 on a site in Sogyeok-dong, Jongno-gu previously used by the Defense Security Command. The plan was unveiled in 2009, and an idea contest and architectural design competition were held in 2010. Construction is now un–derway, and MMCA Seoul, equipped with complex facilities including galleries, library, project gallery, movie theater, and multimedia hall, will accommodate diverse genres of art and establish itself as an open museum that effectively communicates with the public.



Special exhibition
Special exhibition on the Museum collection
Exhibition to celebrate opening of MMCA Seoul

| | 1 | 2 | 3 | 4 | 5 | 6 | 7 | 8 | 9 | 10 | 11 | 12 | |
|--|--|---|---|---|---|--|---|---|---|----|--|---|---|
| MMCA Gwacheon | • New Collections Dec. 2012 – Feb. 2013 | • Choong Sup Lim Dec. 2012 – Feb. 2013 | • New Visions New Voices 2013 Mar. – Jun. 2013 | | | | | | | | | | |
| | • Special Exhibition on Crafts Sept. 2012 – May 2013 | | • Youn Myeung-ro: Traces of the Spirit Mar. – Jun. 2013 | | | | | | | | | | |
| | • Prints/Drawing Apr. 2012 – Feb. 2013 | • Korean Art from the Museum Collection: Contemporary Art and Grand Narratives I Dec. 2012 – Jun. 2013 | • Secret Forest: Sculpture May 2012 – Jul. 2013 | • Donated Photographs Dec. 2012 – May 2013 | • Ornament and Illusion - Spectrum of contemporary jewelry June 2013 | • Korean Art from the Museum Collection: Contemporary Art and Grand Narratives II Jul. 2013 | • Korean Art from the Museum Collection: Kwon Jin-kyu, Kim Chung-sook Aug. 2013 – 2014 | • A Selection of the New Media Collection, Centre Pompidou, Paris: Video Vintage Sept. – Dec. 2013 | • Media Art from the Museum Collection Sept. – Dec. 2013 | | | | |
| | • Collection of the Museum: Sleepwalking: Magical Reality Oct. 2012 – Mar. 2013 | • Figurative Journal: Chung Guyon Archive Feb. – Sept. 2013 | • Collection of the Museum: Bill Viola Apr – Sept. 2013 | | | • Photographs from the Museum Collection Jun. 2013– Jan. 2014 | • Collection of the Museum: Bill Viola Jul. 2013 – 2014 | | | | • Itami Jun Oct. 2013 – 2014 | | |
| Korean Contemporary Art Exhibition Overseas | | | • White & White: Dialogue between Korea and Italy Mar. – Jun. 2013 | | • Who is Alice? May. – Nov. 2013 | | | | | | | | |
| MMCA Deoksugung | • Royal Portraits of the Great Han Empire Nov. 2012 – Jan. 2013 | • Memory of Landscape I Have Never Seen: Collections from National Gallery in Prague Jan. – Apr. 2013 | | | • Yanagi Muneyoshi May – Jul. 2013 | | | | | | | | |
| | • Poetry and Dream May 2012 – Apr. 2013 | | | | • Crafts from the Museum Collection May – Jul. 2013 | | | | | | | | |
| MMCA Seoul | | | | | | | | | | | • Korean Art from MMCA Collection | • Connecting Unfolding Nov. 2013 – 2014 | |
| | | | | | | | | | | | | • On-site Production and Installation Project: Seo Do-Ho, Young-Hae Jang Heavy Industries, Chae U-ran Nov. 2013 – 2014 | |
| | | | | | | | | | | | | • The Alef Project | • The Birth of a Museum : MMCA, Seoul Archive Project Nov. 2013 – 2014 |

National Museum of Modern and Contemporary Art

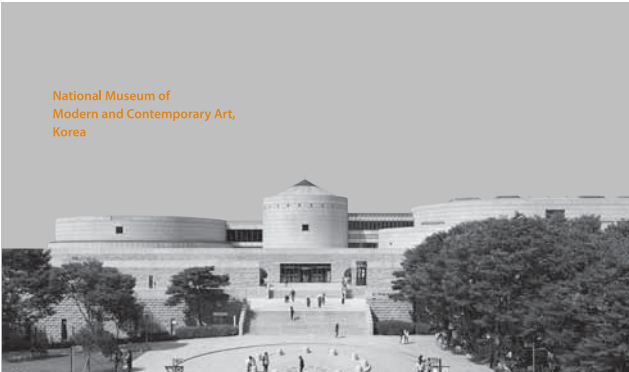
Guide to the Museum 2013 English



National Museum of Modern and Contemporary Art, Deoksugung



National Museum of Modern and Contemporary Art, Gwacheon



National Museum of Modern and Contemporary Art, Korea



National Museum of Modern and Contemporary Art, Gwacheon
313, Gwangmyeong-ro, Gwacheon-si, Gyeonggi-do
Tel: 82. 2. 2188. 6000

National Museum of Modern and Contemporary Art, Deoksugung
5-1, Jeong-dong, Jung-gu, Seoul (Deoksugung Palace)
Tel: 82. 2. 2022. 0600

National Museum of Modern and Contemporary Art, Seoul
36, Samcheong-ro (Sogyeok-dong), Jongno-gu, Seoul

www.moca.go.kr
Art.mu

Educational Programs & Cultural Events

MMCA intends to help the public better understand contemporary art and culture through various art museum educational programs. MMCA also strives to be an art museum in everyday life through culture programs linked with exhibitions and seasonal culture programs. We ask visitors to the museum to actively participate and take interest in the educational programs of MMCA, which seeks on-going communication.

Educational Programs

Education for professionals
Programs to foster prospective museum and art professionals
Curators' league, Training for teachers, Art and culture course, Internship program

Education for ordinary citizens
Art and culture course for housewives, senior citizens, office workers and art lovers
Modern and Contemporary Art History Academy, Art and culture course for office workers, Docent training program, Guided tour of exhibitions

Youth education linked to schools
Appreciation of art and hands-on activities for elementary, middle, and high school students.
Docent experience program for youths, appreciation of contemporary art by youths, exploration of art museum careers (elementary and advanced levels)

Education linked to special exhibitions
Education for specific groups to increase understanding of special exhibitions held at MMCA

Culture sharing program
Art appreciation and hands-on program to create a culture sharing society through art
Visiting art museum program, Museum field trip for mul-ticultural families, Museum field trip for disabled children.

Edu-Studio
Educational program designed to help children better understand contemporary art
Art Lab of Nam June Paik, Family Weekend at Edu-Studio

Cultural Events

Cultural events linked to exhibitions
Art and culture performances and talk shows linked with exhibitions are offered to help visitors better understand exhibitions.

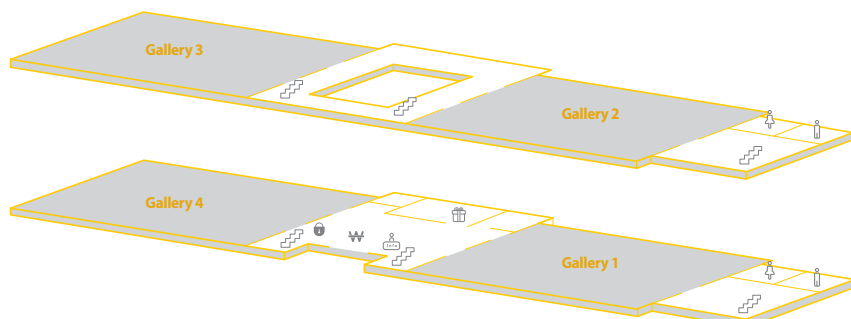
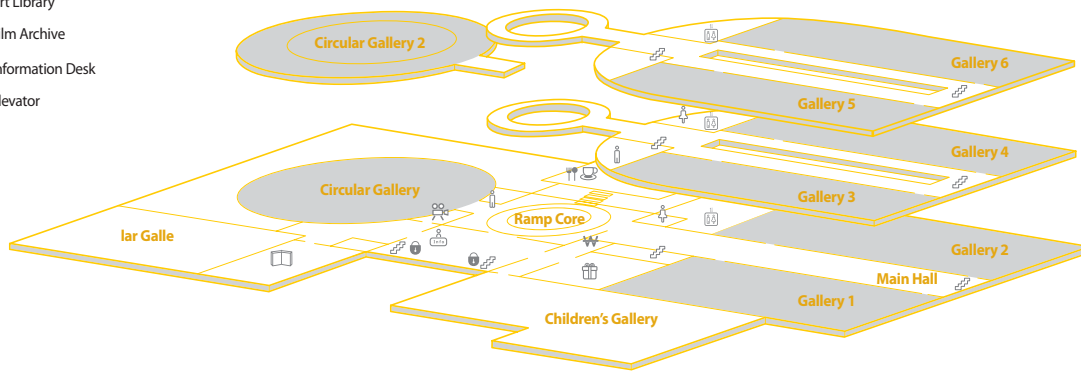
Seasonal culture events
Cultural event programs on the occasion of Family Month, and summer and winter vacations
Concerts, operas, ballet performances, musicals, movies, etc.

Visit our website for details of education and program schedule

Galleries & Amenities

National Museum of Modern and Contemporary Art, Gwacheon

- Restaurant
- Restroom
- Locker
- Ticket Office
- Museum Shop
- Cafeteria
- Art Library
- Film Archive
- Information Desk
- Elevator



National Museum of Modern and Contemporary Art, Deoksugung

- Locker
- Restroom
- Ticket Office
- Museum Shop
- Information Desk

Membership

Join the membership of MMCA today and enjoy many benefits

How to apply: Visit the membership reception desk or visit our website

Annual fee: 20,000 won

Member benefits Exhibitions

- Free admission to MMCA Gwacheon (including special exhibition)
- Free admission to MMCA Deoksugung (May not apply to jointly hosted exhibitions)
- Curator guided gallery tour

Art Creation Site

- Invitation to the 'Open Studio' event of the National Art Studio
- Meeting with the winner of Korea Artist Prize

Art Education

- Learning about Contemporary Art in English for children of members
- Educational programs linked with exhibitions

Newsletter

- On line MMCA webzine Artmu
- DM on education/culture/symposium of MMCA

Reciprocal Membership

- Discount on admissions to Seoul Grand Park and Seoul Land
- 5-10% discount at art shop and café of the Museum
- 10% discount at restaurants near the museum

Museum Hours

March - October Tue-Fri: 10:00 a.m. - 6:00 p.m. Sat-Sun: 10:00 a.m. - 9:00 p.m.

November - February Tue-Fri: 10:00 a.m.-5:00 p.m. Sat-Sun: 10:00 a.m. - 5:00 p.m.

※ Closed Mondays (except when Monday is a holiday, in which case the museum will close the following day) and January 1.

※ Last admission shall be one hour before closing.

Admission

Permanent exhibition: Free

Special exhibition: Special charges apply (Visit our website for details)

※ 20% discount for groups of 10 or more.

※ 20% discount for Happy Point Card holders and Asiana Club members

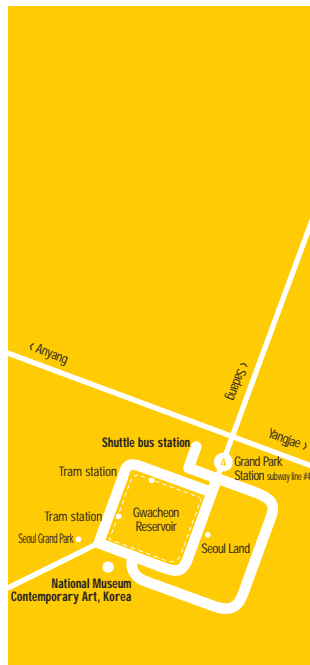
※ Free admission for minors under 18 and seniors (65 and older), disabled persons with one accompanying person, and H Class Happy Point Card holders, and Platinum Asiana Club members

Directions

By Shuttle Bus: A free shuttle bus to the museum runs every 20 minutes from 9:40 at exit 4 of Seoul Grand Park Station on line 4. (During extended museum hours, the shuttle bus runs every 30 minutes.)

By Tram: A tram that runs a circular route around the park is available at exit 2 of Seoul Grand Park Station on line 4.

By Foot: Walk from exit 2 of Seoul Grand Park Station on line 4 in the direction of Seoul Grand Park.



Museum Hours

Tue - Thur 10:00 a.m. - 5:00 p.m.

Fri - Sun 10:00 a.m. - 9:00 p.m.

※ Closed Mondays
※ Last admission shall be one hour before closing.
※ Hours may vary during special exhibitions.

Admission

Different ticket prices apply for each exhibition
(To find out more details visit our website.)

Directions

Located in Deoksugung.
Take Sub way Line 1 or Subway Line 2 to City Hall Station and use Exit 2 or Exit 12

※ Entrance through Daehannun, the main gate of Deoksugung

※ Paid parking lots available nearby



Opened in 1969, MMCA has sought to maximize opportunities for the public to enjoy art and culture in various ways and to develop fine art in Korea. It has arranged and hosted exhibitions covering many genres of art. Since the museum became a performance organization in 2006, it has strived to satisfy the public needs for culture by hearing the needs of its users through surveys and research on contemporary art, collection and preservation of artworks, and education on art. As a national art museum in Korea and in keeping with the global trend of creation of a national brand through art, MMCA is committed to the globalization of Korean art by expanding the base of contemporary art and international exchange, aiming to bolster the Korea Brand.

National Museum of Modern and Contemporary Art